



X200xp

The next generation of the world's smallest dual-use thermal imaging camera, the Thermal-Eye X200xp incorporates the industry's leading imaging technology and offers unmatched value at an affordable price.



Soldiers seen through smoke

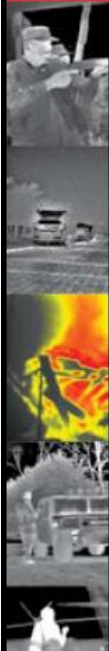


Applications:

- Target detection
- Force protection
- Routine patrols
- Search and rescue
- Disturbed surface
- Covert surveillance
- Fugitive pursuit
- Soldier and officer safety

Benefits:

- Greater scene detail with improved clarity, sharpness and overall image quality
- Improved vision in challenging field conditions like dust, smoke and complete darkness with no blooming from lights
- Fully dimmable display minimizes night blindness
- Stows easily into pocket for quick extraction and covert operation in the field and on the run



Suspicious activity in the woods

Features:

- 30Hz 30µm detector offers fast turn-on time and real-time video image
- 50% greater stand-off range than X100 predecessor to detect human activity from up to 450 meters away
- Sophisticated image processing for best-in-class image quality
- Rugged design with integral rubber eye cup can survive accidental drops and underwater submersion to 9 feet
- Pocket-sized, weighing only 13 ounces
- Operates on 2 AA lithium or alkaline batteries

X200xp TECHNICAL SPECIFICATIONS:

FEATURES		THERMAL-EYE X200xp
Focal Plane Array	Material & Structure	Amorphous Silicon Microbolometer
	Pixel Count (Resolution)	160 x 120
	Spectral Response	7-14µm (filter bandwidth)
	Thermal Sensitivity	≤50 mK
Thermal Imaging Performance	Start-up Time	~ 4 seconds (includes 2 second display of start-up logo)
	Brightness/Contrast	Fully automatic
	Range to Detect Human Activity	Up to 1500ft (450m)
	Susceptibility to Blinding Visible Light	None
	Infrared Polarity	White Hot
Optics	FOV (H x V)	11° x 8°
	Focal Length (mm)	25mm
	Minimum Focus Distance	~ 3ft (1m)
Video	Output Format	Analog: NTSC or PAL on rear outlet jack
	Viewfinder Display	Monochrome LCD (320 x 240 pixels)
	Viewfinder Dimming	Integral to power on/off switch
Power	Power Source	2 AA batteries
	Operating Time	~ 2.5 hours with alkaline, ~ 6 hours with lithium
	Auxiliary Power	12VDC input on rear outlet jack
Environmental Characteristics	Operating Temperature	-4°F to 140°F (-20°C to 60°C)
	Storage Temperature	-4°F to 176°F (-20°C to 80°C)
	Water & Shock Resistance	Waterproof to 9ft (3m) submersion, buoyant in fresh water Shockproof to 6ft (2m) drop
	EMC Compliance	FCC Part 15 & CE Mark
Physical Characteristics	Size	5-1/4"L x 4-1/2"W x 2"H (13.4 x 11.4 x 5.1cm)
	Weight	13oz. (381g), batteries installed
	Eye Cup	Integral to camera body with 2" eye relief
Ordering Information	Camera Part Numbers	NTSC: 7070410-0001 PAL: 7070410-0003
Camera Features		<ul style="list-style-type: none"> • Enhanced DSP image processing • On-screen battery level indicator • Left- or right-hand operation with rugged slip-resistant grip • Tactile battery loading feature for stealth nighttime operation • External power input and video output jacks • Long eye-relief viewfinder for use with glasses, face shield, masks, etc. • 1/4-20 tripod mount
Standard Equipment		<ul style="list-style-type: none"> • Hard protective case • 2 AA alkaline batteries • Neck strap & wrist strap • Lens cover • Lens cleaning cloth

Please call for additional information.



ASPECT TECHNOLOGY & EQUIPMENT, INC

811 E Plano Pky #107 • Plano, TX 75074 • Phn 972-423-6008/Fax 972-423-7717 • email aspect@airmail.net • www.aspecttechnology.com



THERMAL-EYE